



IAG Top Feed Fuel Rail Set (v.03)

Fits: 2002-14 WRX, 07-21 STI, 08-12 LGT, 06-13 FXT

Part# IAG-AFD-2102BK, 2102RD, 2102GD

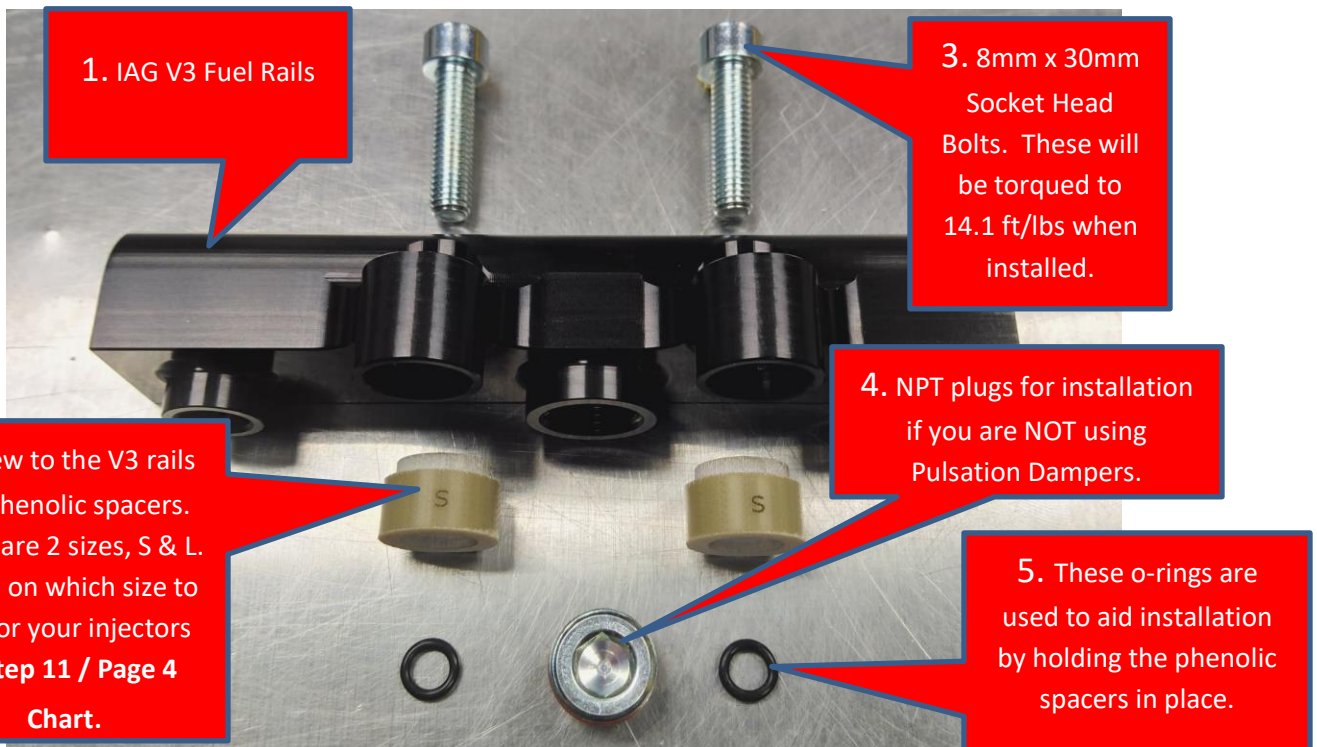
Thank you for choosing the IAG Fuel Rail Kit. IAG recommends professional installation for this product. If you do the installation yourself, please reference the OE Service Manual for steps not listed in these instructions. If you do not own a Service Manual you can access and download the Subaru Service Manual for your car online at techinfo.subaru.com (\$34.95).



Tools Required – 6MM Allen Socket, 8mm Allen Socket, Ratchet and Torque Wrench that can read between 14ft-lbs.

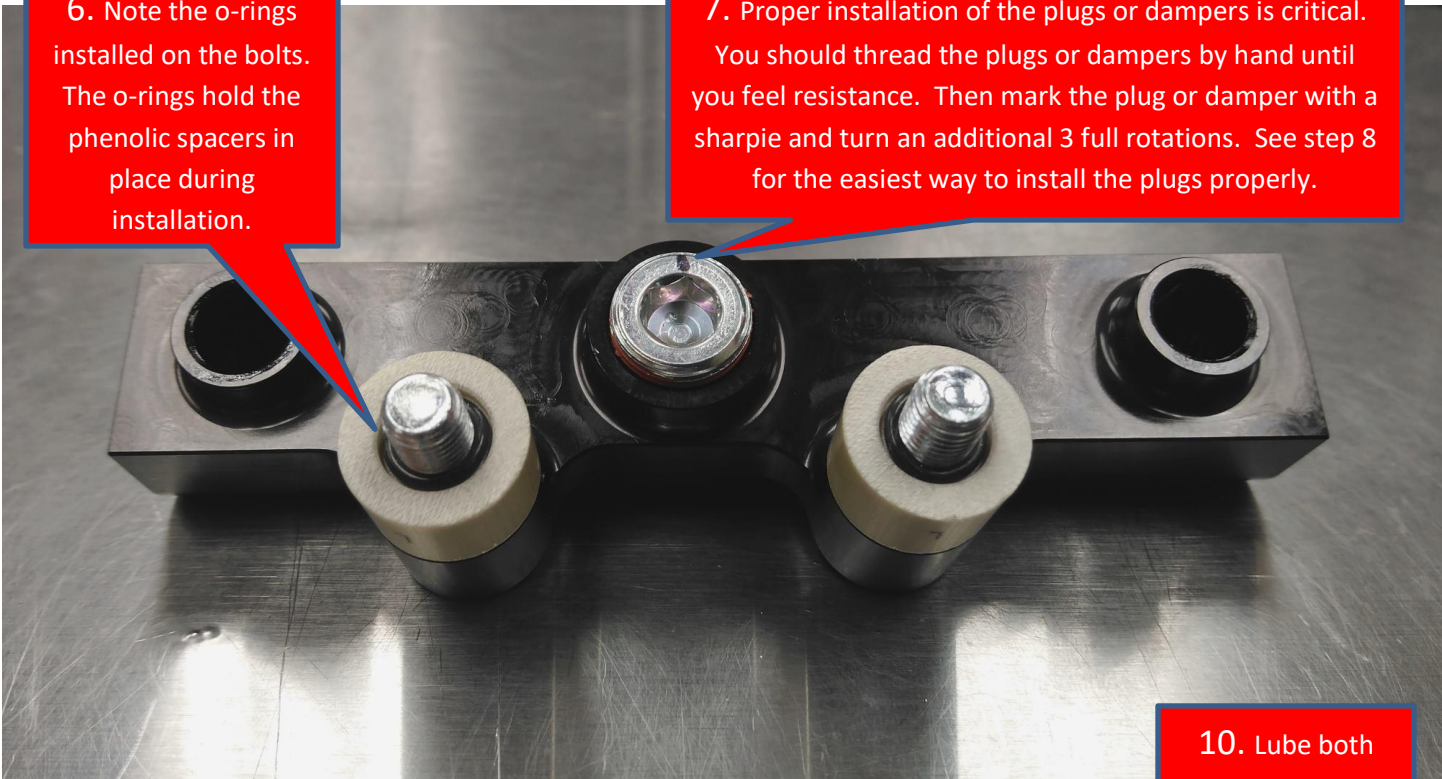
Parts List

Part Name	Quantity	Notes
IAG Billet Fuel Rails	2	
IAG Phenolic Spacers Long	4	Marked with L (.625" overall length)
IAG Phenolic Spacers Short	4	Marked with S (.500" overall length)
3/8" NPT Plugs	2	These are used if you don't purchase fuel pressure dampers.
O-ring to hold Phenolic Spacers	4	O-rings are used to hold the phenolic spacers on during installation.
M8x30mm Socket Head Bolt	4	

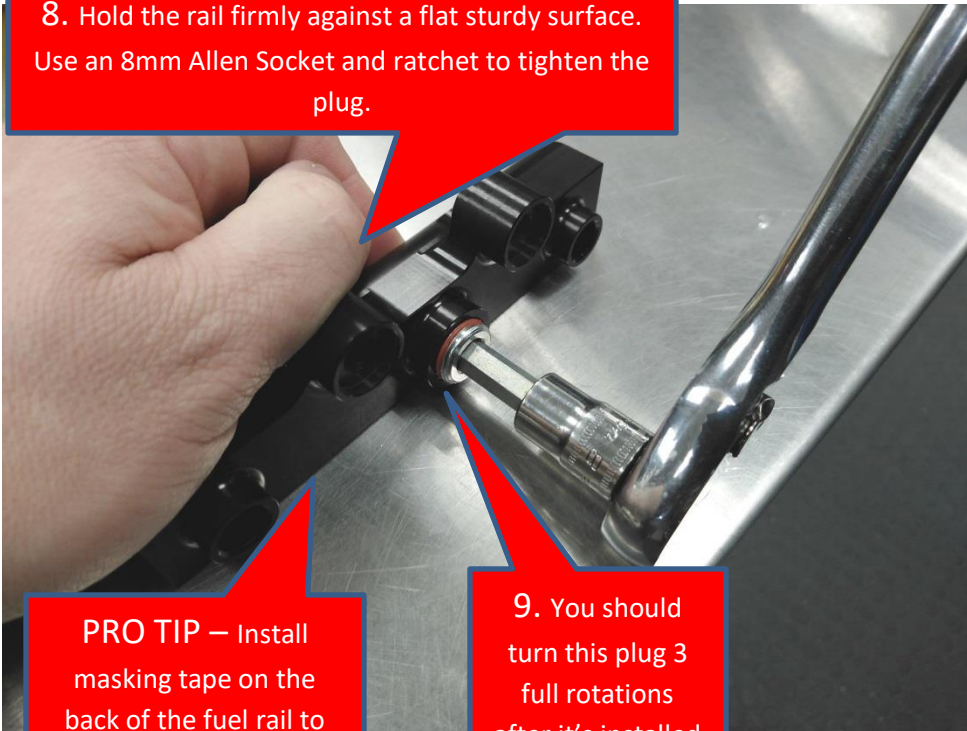


6. Note the o-rings installed on the bolts. The o-rings hold the phenolic spacers in place during installation.

7. Proper installation of the plugs or dampers is critical. You should thread the plugs or dampers by hand until you feel resistance. Then mark the plug or damper with a sharpie and turn an additional 3 full rotations. See step 8 for the easiest way to install the plugs properly.



8. Hold the rail firmly against a flat sturdy surface. Use an 8mm Allen Socket and ratchet to tighten the plug.



10. Lube both the top and bottom o-rings before installation.



PRO TIP — Install masking tape on the back of the fuel rail to prevent scratching during this step.

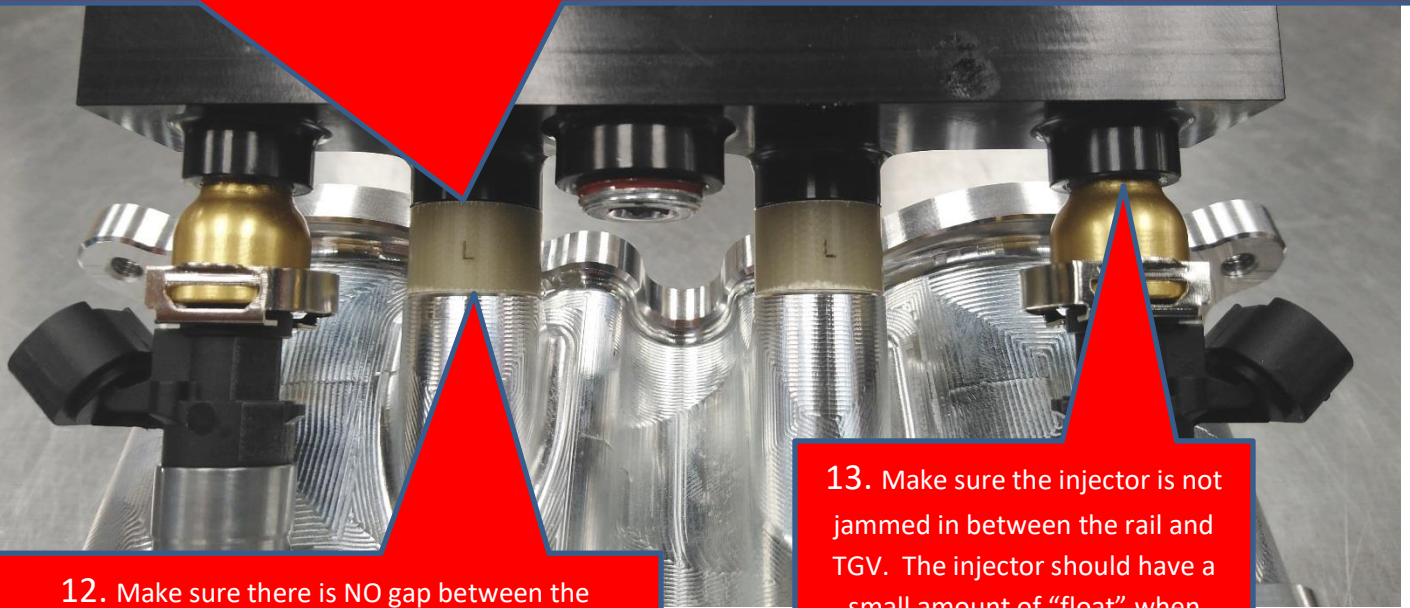
9. You should turn this plug 3 full rotations after it's installed finger tight.



11. Please make sure to use the correct spacers for your injectors.

Spacers marked with "S" (.500") are for South Bay 1000cc, OEM STI Blue, FIC 1000cc and (ID 2000cc with OEM TGV).

Spacers marked with "L" (.625") are for ID 1000cc, ID 1050x, ID 1300cc, ID 1700cc and (ID 2000cc with IAG TGV's).

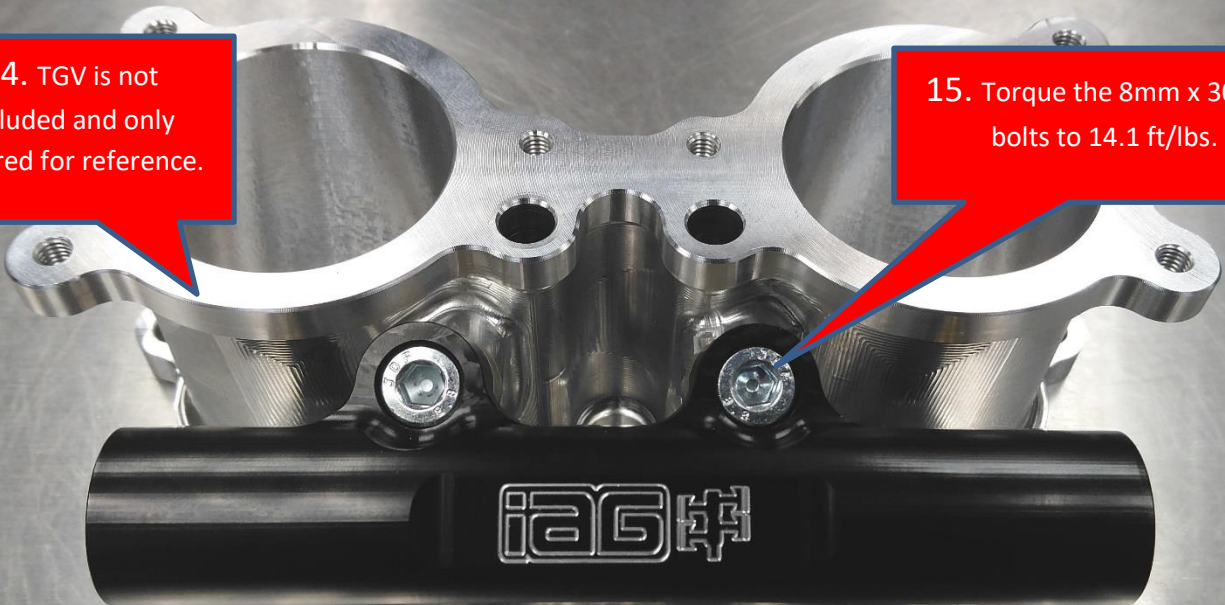


12. Make sure there is NO gap between the phenolic spacer and TGV. If there is, you are using the wrong spacer.

13. Make sure the injector is not jammed in between the rail and TGV. The injector should have a small amount of "float" when installed properly.

14. TGV is not included and only pictured for reference.

15. Torque the 8mm x 30mm bolts to 14.1 ft/lbs.





Phenolic Spacer Fitment Chart

TGV Type	Injector Type	Spacer Size
IAG TGV Housing	ID 1000cc	Large
IAG TGV Housing	ID 1050X	Large
IAG TGV Housing	ID 1300cc	Large
IAG TGV Housing	ID 1700cc	Large
IAG TGV Housing	ID 2000cc	Large
IAG TGV Housing	FIC 1200cc	Large
IAG TGV Housing	South Bay 1000cc	Small
IAG TGV Housing	OEM STI Blue	Small
IAG TGV Housing	FIC 1000cc	Small
OEM TGV Housing	ID 1000cc	Large
OEM TGV Housing	ID 1050X	Large
OEM TGV Housing	ID 1300cc	Large
OEM TGV Housing	ID 1700cc	Large
OEM TGV Housing	ID 2000cc	Small
OEM TGV Housing	South Bay 1000cc	Small
OEM TGV Housing	OEM STI Blue	Small
OEM TGV Housing	FIC 1000cc	Small