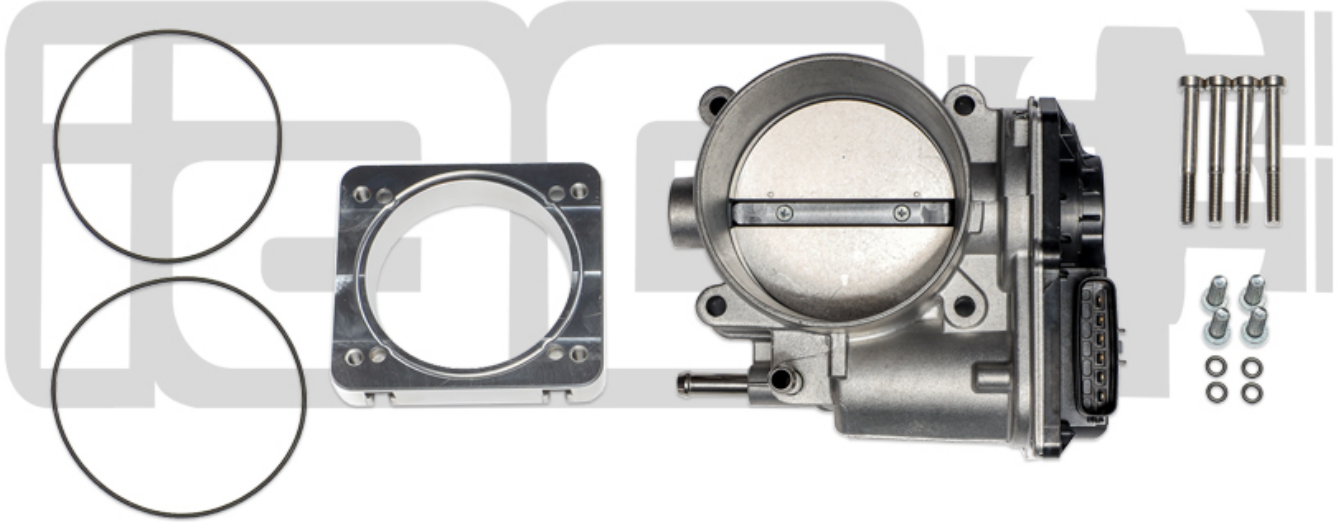


IAG Big Bore 76mm Throttle Body & Adapter for Process West Manifolds



IAG-AFD-2028 IAG Big Bore 76mm Throttle Body & Adapter Package for Subaru STI Process West Intake Manifolds

Part# IAG-AFD-2024

Tools Required: Ratchet, Torque Wrench, Pliers

Sockets: 10mm, T20H Torx, 4mm allen socket.

Congratulations on the purchase of your Big Bore Throttle Body Adapter, and thank you for choosing IAG Performance. This installation manual is intended to guide you through the modification of the factory timing system and the installation of the IAG Big Bore Throttle Body Adapter. This installation assumes that you are familiar with the removal of the factory throttle body assembly. If you are not familiar with this procedure please consult the factory service manual for your vehicle. If you do not own the factory service manual you may purchase temporary access at https://techinfo.subaru.com/stis/#/purchase_subscription to aid in your installation. Professional installation of this product is recommended and custom fabrication and tuning will be required for operation.

Step 1/8

WARNING

The IAG Throttle Body Adapters and Packages are for OFF-ROAD USE ONLY and are not to be used on vehicles subject to emissions controls. The replacement throttle body will require modifications to your intercooler piping or couplers. The OEM style MAP sensor will not bolt to the replacement throttle body. IAG recommends the use of an aftermarket MAP sensor connected, or threaded into, the intake manifold.

Step 2/8

Step 3/8

Numbered annotations (1)

- 1 Remove the throttle body from the vehicle. Refer to the factory service manual for instructions, if needed.





Step 4/8

Numbered annotations (1)

- 2 Locate the throttle body adapter and install one of the supplied o-rings in the receiver groove.



Step 5/8

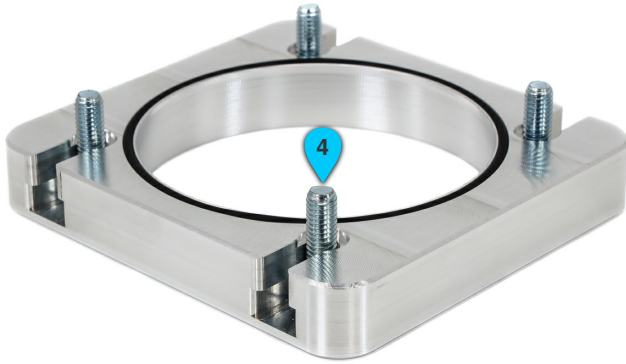
Numbered annotations (1)

- 3 Install the other supplied o-ring in the groove on the other side of the plate.

Step 6/8

Numbered annotations (1)

- 4 Slide the four short manifold mounting bolts into position using the slots in the plate. The four small o-rings can be slid over these bolts to hold them in place during installation.



Step 7/8

Numbered annotations (1)

- 5 Attach the plate to the manifold using the bolts installed in the plate. Torque to 8 NM.





Step 8/8

Numbered annotations (1)

- 6 Attach the throttle body assembly to the manifold using the four remaining bolts. Torque to 8 NM.