



U.S. BASED SUPPORT

HOURS: MONDAY - FRIDAY | 8AM - 5PM EST



1.410.840.3555



support@iagperformance.com



VIDEO INSTRUCTIONS

<https://www.youtube.com/watch?v=JjAlKHJVmXg>





IAG Battery Tie Down For Subaru

IAG Battery Tie Down for Subaru

Part Number: IAG-ACC-5329

Congratulations on the purchase of your Battery Tie Down, and thank you for choosing IAG Performance! These instructions are intended for users with basic mechanical skills. Professional installation is not required.

Product includes:

1 Battery Tie Down

2 Tie Down Cover

3 (X2) Color Plates

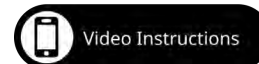
4 2mm Allen Wrench

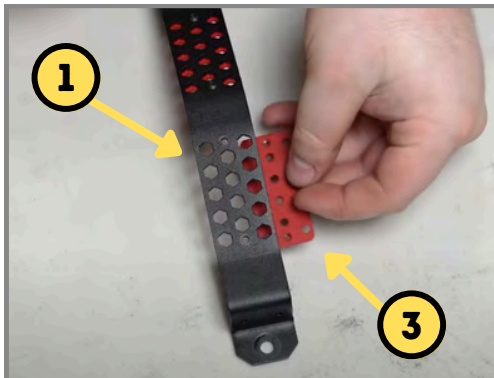
**5 (X2) 10mm Nuts
(X8) 2mm Allen Bolts**



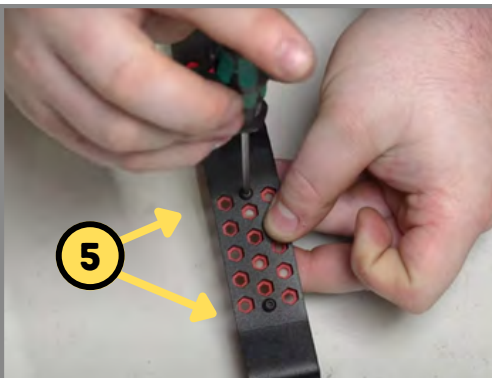
Tools Needed:

- 10mm Wrench/Deep Well Socket
- 2mm Allen Wrench (Provided)





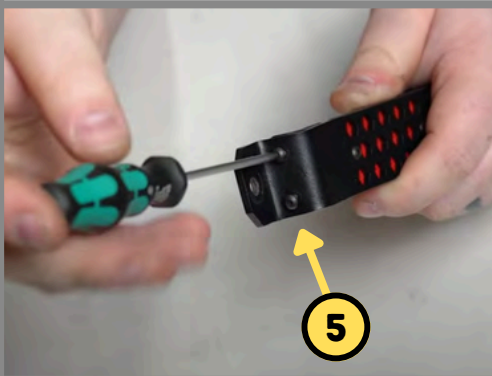
Step 1: Prepare the IAG Battery Tie Down and Color Plates.



Step 1.2: Using a 2mm Allen wrench, install the Color Plates with four provided Allen Bolts. Tighten until snug.



Step 2: Prepare the IAG Battery Tie Down and Tie Down Cover.



Step 2.2: Using a 2mm Allen Wrench, install the Cover with four provided Allen Bolts. Tighten until snug.



Step 3: Using a 10mm Wrench, loosen the two nuts on the factory Battery Tie Down. Remove the factory Tie Down.



Step 4: Remove the Hold Down Rods from the factory Battery Tie Down. Replace factory nuts with provided pair.



Step 5: Install the Hold Down Rods into the IAG Tie Down. Install the short rod towards the rear.



Step 6: Install the IAG Tie Down into the vehicle. Tighten down the bolts evenly to factory spec.



If you have any questions about the installation or product please contact support@iagperformance.com or call 410-840-3555